



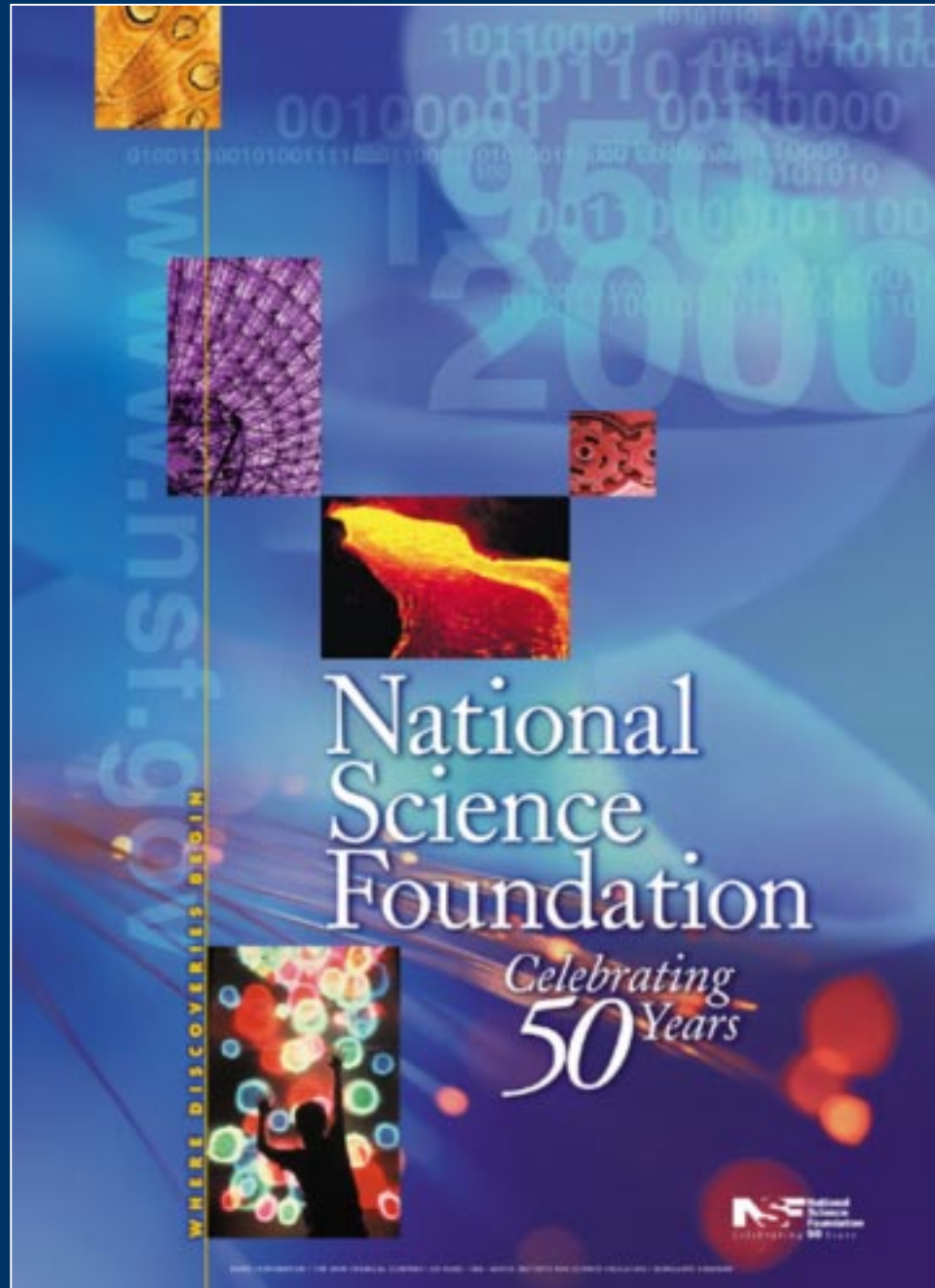
# NSF At 50: Spurring Discovery Through Connectivity

**Dr. Rita Colwell**  
**Director**

**National Science Foundation**



**April 4, 2000**



# NSF At 50: Spurring Discovery Through Connectivity

- Overview of budget proposal
- Connections between science and society
- Interchange between government, industry, and academia



National Science Foundation

Where  
**Discoveries**  
Begin



# National Science Foundation

## FY 2001 Budget Request

---

- 17.3% over current level
- NSF increase: \$675 million
- NSF total: \$4.6 billion
- Core activities: \$300 million

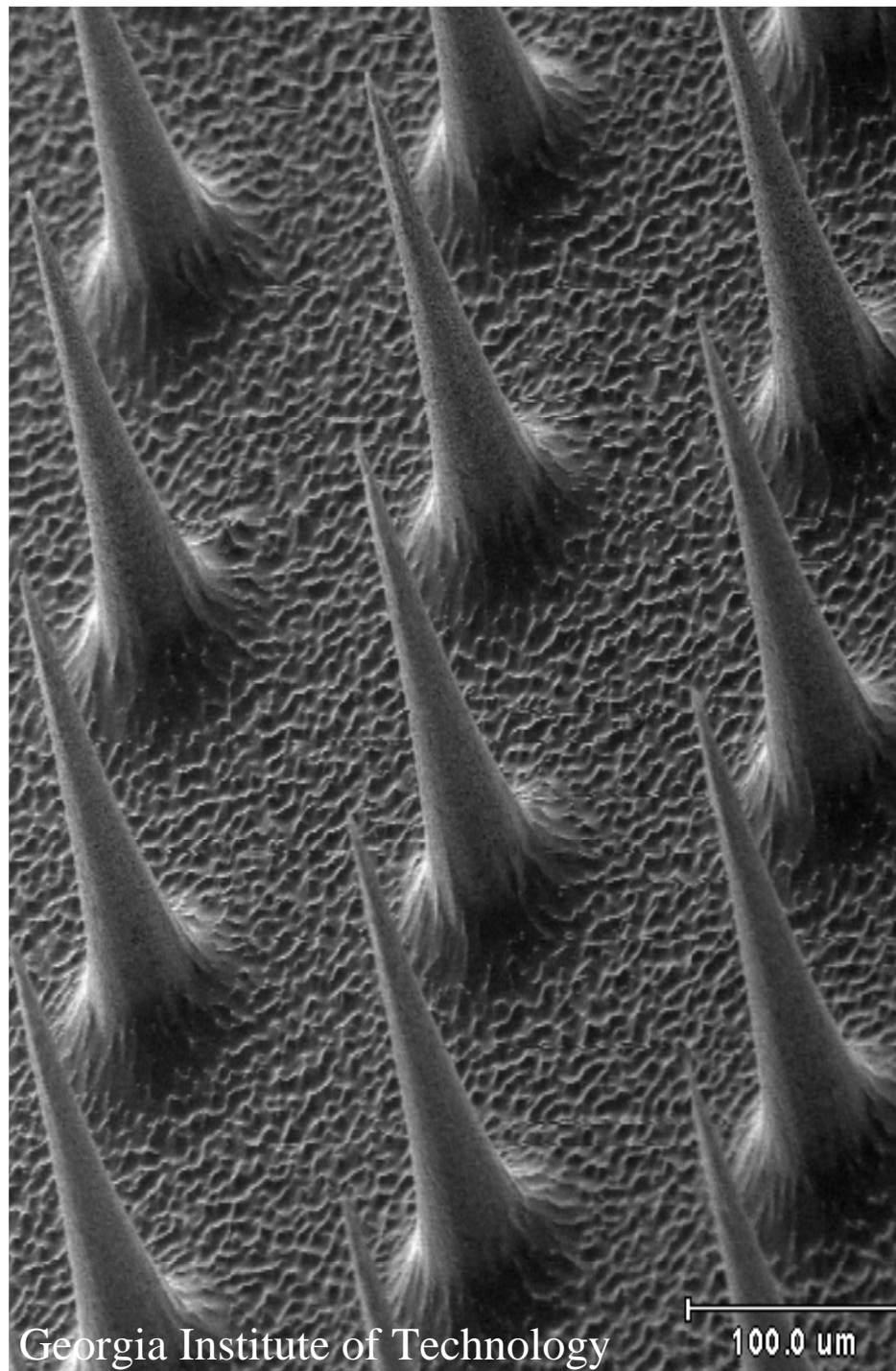
# NSF Budget Request By Initiative

*Millions of Dollars*

	<b>FY 2000 Plan</b>	<b>FY 2001 Request</b>	<b>Percent Change</b>
Info. Technology	\$126	\$327	159%
Nanoscale S&E	\$97	\$217	123%
Biocomp. in the Env.	\$50	\$136	172%
21 <sup>st</sup> Cent. Workforce	\$74	\$157	112%







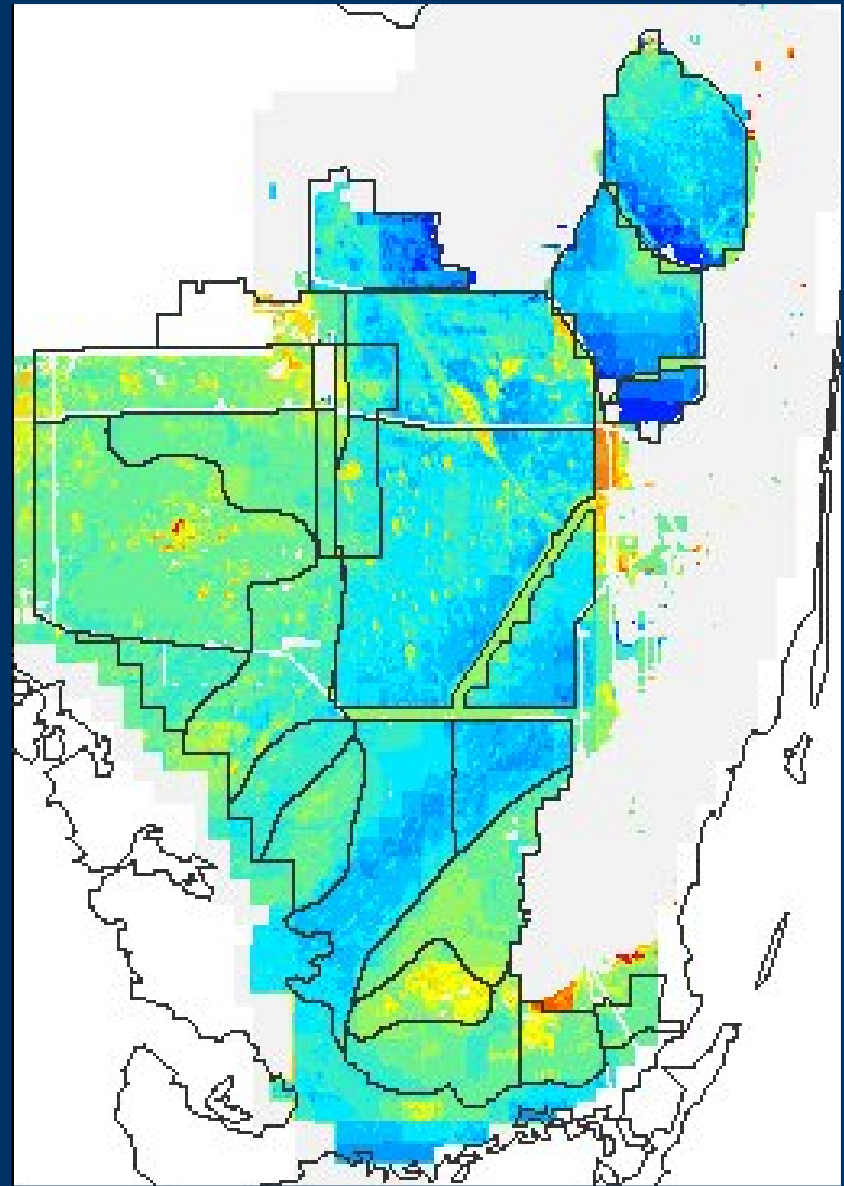
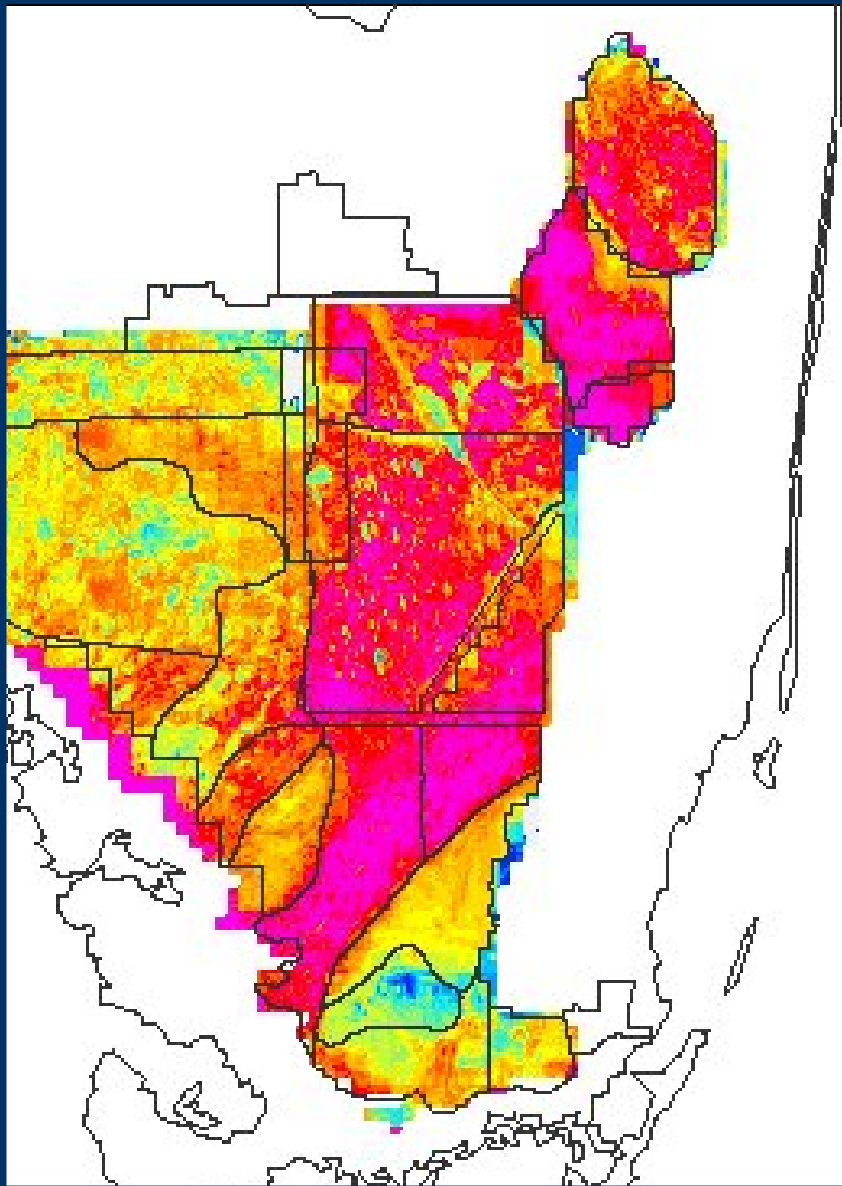




**David Stahl, Northwestern Univ.**



Univ. of Illinois  
Urbana-Champaign



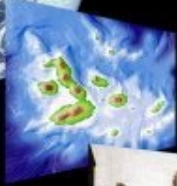
**Hydrology** *affects* **Habitat**

ATLSS/Univ. Tennessee/USGS





**PLANET**



**ECOSYSTEM**



**COMMUNITY**



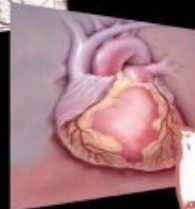
**HABITAT**



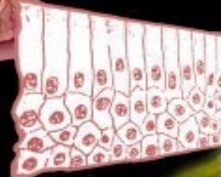
**POPULATION**



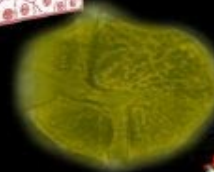
**ORGANISM**



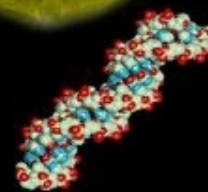
**ORGAN**



**TISSUE**



**CELL**

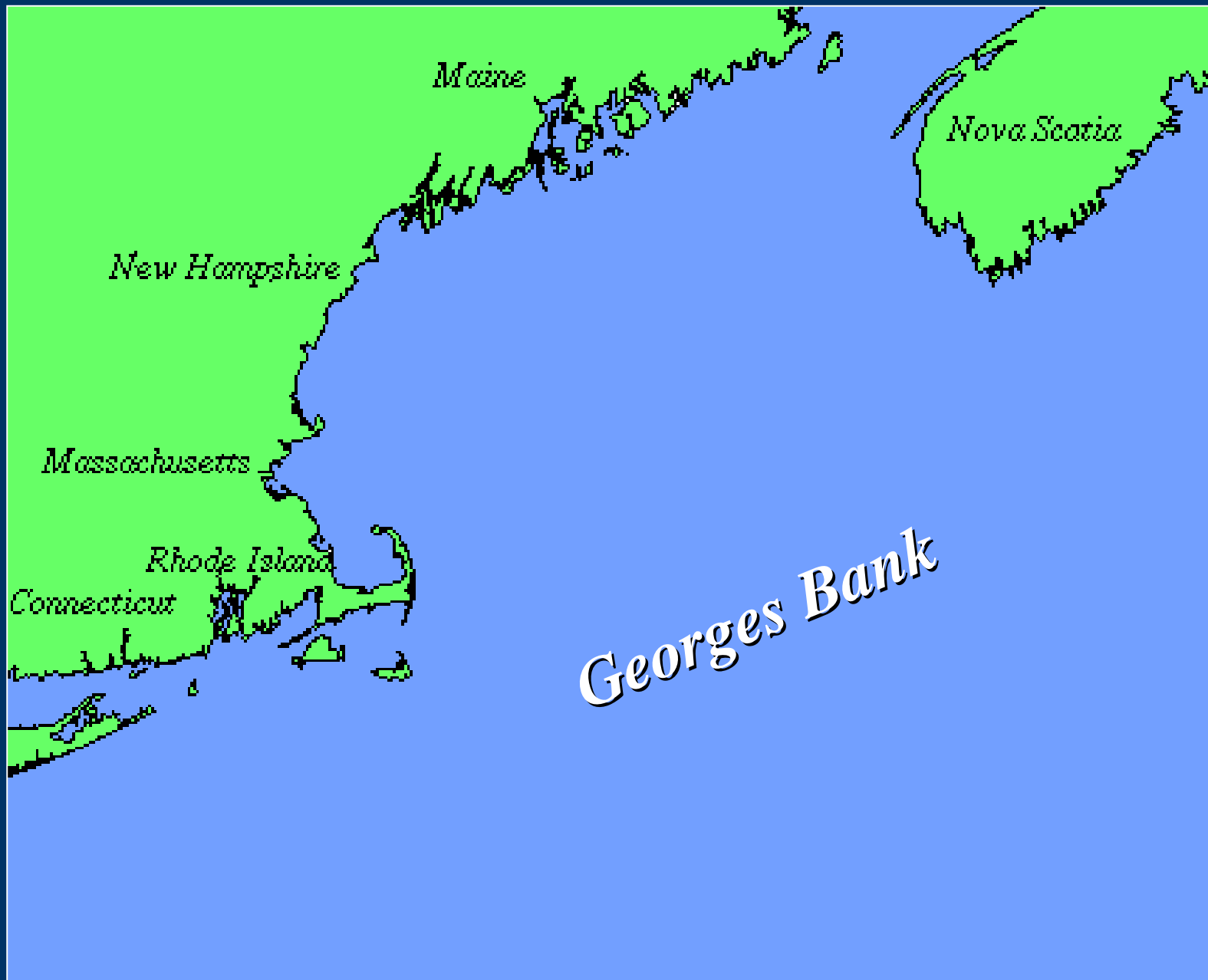


**MOLECULE**



**ATOM**





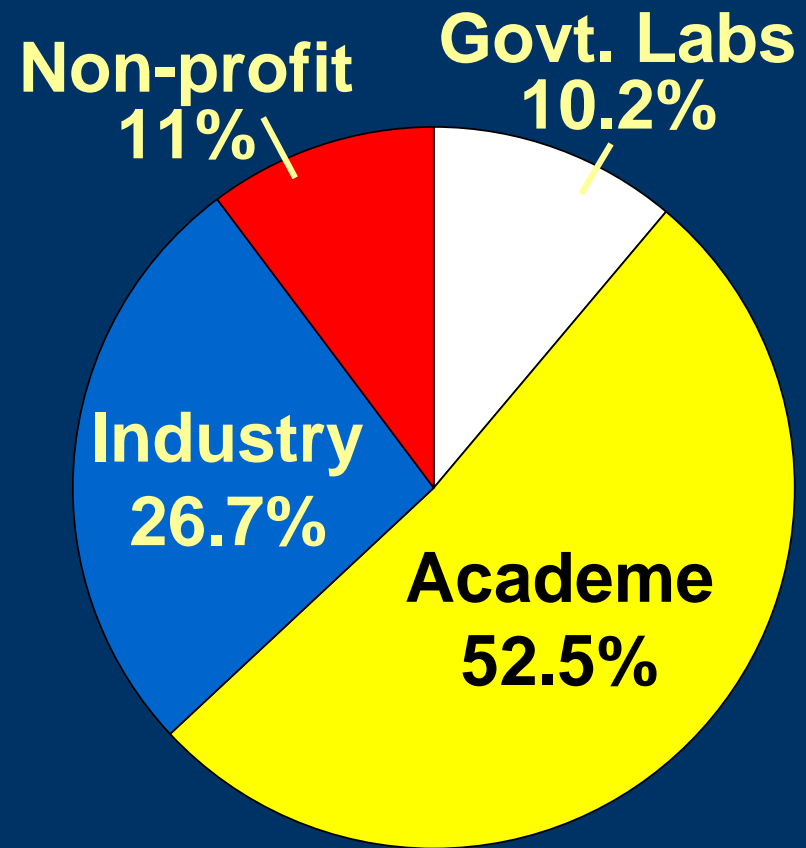






# Science/Technology Linkage

US patents  
increasingly  
backed by  
public  
research.



Cited Papers:  
US Patents



“I skate to where  
the puck is *going*,  
not to where it’s  
been.”

- Wayne Gretzky